



userguide

The R&TTE Directive

We, the manufacturer hereby declare that this equipment, model RCK-T07 is in compliance with the essential requirements and other relevant provisions of Directive 1995/5/EC.



FEDERAL COMMUNICATIONS COMMISSION INTERFERENCE STATEMENT

This equipment has been tested and found to comply with the limits for a Class B digital device, pursuant to part 15 of the FCC Rules. These limits are designed to provide reasonable protection against harmful interference in a residential installation. This equipment generates, uses and can radiate radio frequency energy and, if not installed and used in accordance with the instructions, may cause harmful interference to radio communications. However, there is no guarantee that interference will not occur in a particular installation. If this equipment does cause harmful interference to radio or television reception, which can be determined by tuning the equipment off and on, the user is encouraging to try to correct the interference by one or more of the following measurements:

- Reorient or relocate the receiving antenna.
- Increase the separation between the equipment and receiver.
- Connect the equipment into an outlet on a circuit different from that to which the receiver is connected.
- Consult the dealer or an experienced radio/TV technician for help

Caution:

Any changes or modifications not expressly approved by the grantee of this device could void the users authority to operate the equipment

RF exposure warning

The equipment complies with FCC RF exposure limits set forth for an uncontrolled environment. The equipment must not be co-located or operating in conjunction with any other antenna or transmitter.

Congratulations on purchasing the Genee Slate

Genee Slate is a 2.4G wireless solution table. Without complicated wireless software installation, just install the tablet driver and plug our wireless receiver dongle to your PC and you can use it freely anywhere. Moreover, Genee Slate supports Windows Vista. If you do not want to use these extra hot key, volume adjustment and macro key function, you can do not even need to install any driver. Just follow this quick guide and enjoy your e-life with our Genee Slate

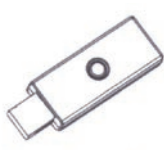
1. Package content



▲Tablet *1



▲New boss pen*1



▲Receiver dongle*1



▲Quick guide*1



▲pen tip*2



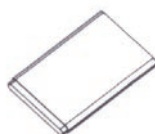
▲CD*2



▲Pen tweezers*1



▲Application manual*1

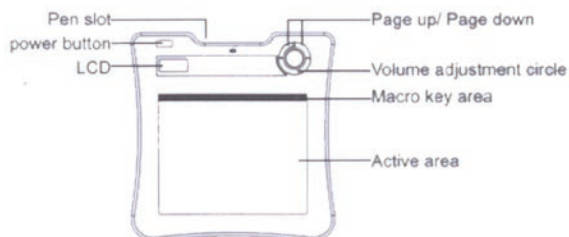


▲Li-ion battery *1

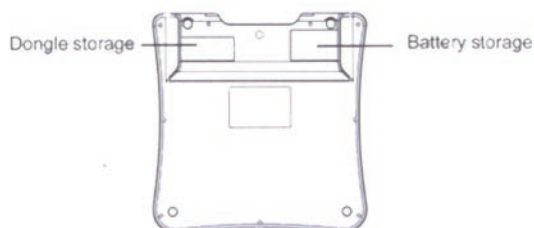
2. Hardware

Slate:

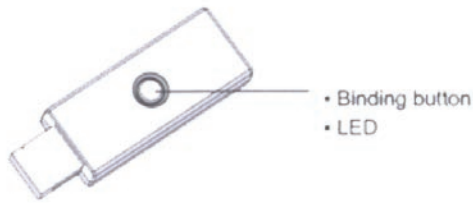
Front side



Back side

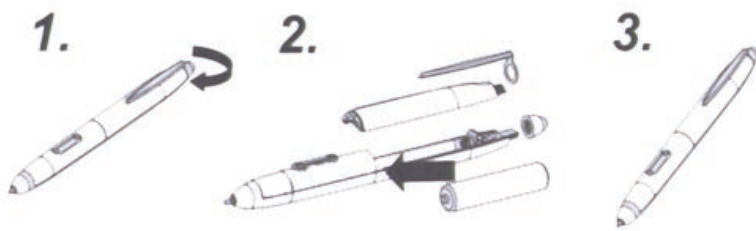


Receiver Dongle:

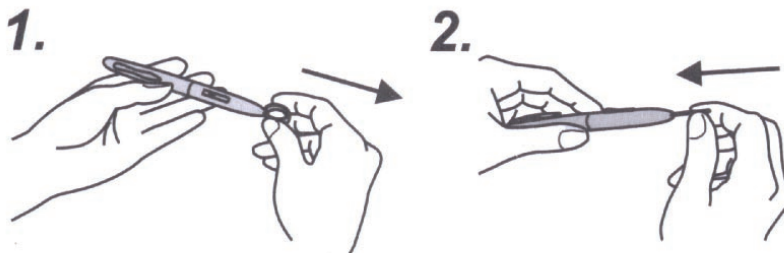


Pen:

How to change the battery








How to change the pen tip



3. LCD introduction



-  Power on: After pressing the power button for 3 seconds, this icon is shown
-  Battery indicator: There are four battery level indicators
-  Active: Tablet will get into power saving mode if the pen is off the active area 3 seconds later and this icon will be hidden
-  Connecting: After you bind successfully, this icon is shown. It means that connection between the PC and tablet has been successful.
-  Token right: This means that your tablet is authorised by the receiver dongle to send the package.



The interaction between pen and tablet:

- Blanking: Pen gets in to the detectable area
- Still: Pen tip on the active area

←→+ Volume adjustment indicator: you can use the pen on the volume adjustment circle to adjust the volume

- →+ Clockwise; adjust volume louder
- ←- Anticlockwise: adjust volume down

00 1 Tablet number: One receiver dongle can connect to more than one Genee slate you can distinguish which tablet it is.

4. Installation

- Windows Vista Home Premium above.

Genee Slate is a Windows Vista Plug and Play device. You can use the basic tablet function without installing any driver, just plug and play. However, our patented macro key function provides you with an effective and productive way to operate application. Moreover, the hot key of Page up/Page down and volume adjustment circle will require drivers (included in Macro Key Manager). Therefore, you can install Macro Key Manager to make keys and those hot keys to work.

- Windows 2000/XP/Vista Home Basic

Under Windows 2000/XP/Vista Home Basic, you have installed driver (included in Macro Key Manager). Therefore, please install Macro Key Manager before the device is plugged to your PC. Once Macro Key Manager is installed successfully, Genee Slate can work the macro key and the hot keys work also.

5. Star use

1. Plug receiver dongle to your PC
2. Press for at least 3 seconds to power on the Genee Slate
3. Press the biding button on the back side of the tablet and biding button of the receiver dongle at the same time.
4. The LCD of the tablet will blank and the blue LED of the dongle will also blank
5. Once the binding is successful, the number on the LCD will show 000 to 001 or others (if binding more than one table).
6. Since there are power saving design with our pens, please always have our pen tip on any area of the tablet first to wake up the pen before you start using the tablet.
7. Check if the information of LCD indicator is display correct.
8. If yes, you can start to use it freely.

6. Specification

Solution	Wireless 2.4G RF
Dimensions	278x282x20mm
Active Area	7.84x5.92
Resolution	2000dpi
Report Rate	120rpst
Pen Pressure	1024 levels
Macro Key	16 (top of active area)
Hot Key	Page up/Page down
LCD type	TN LCD
LCD size	17,7x40.9mm
LCD Icon Content	Battery status-4 levels: charged: connection mode: connection power status/volume status/tablet number
Battery Type	Nokia BL5C Li-ion rechargeable battery
Battery Capacity	800MA
Battery Life	16 hrs continuing mode
Power Source	USB charged
Power Button	Electrical Power Button
Power Consumption	Max 50 MA (operation mode)
Receiver Dongle	Yes