

Genee Toolbar

2.1.3

Quick Guide

March 2010

GENEE TOOLBAR 2.1.3



(NEXT) This button is used to navigate to the next slide.



(BACK) This button is used to navigate to the previous slide.



(STOP SLIDESHOW) Stop the Slide Show.



(ANNOTATOR 1) Left-click to annotate. Right-click for Colour Palette & Pen Width options.



(ANNOTATOR 2) Left-click to annotate. Right-click for Colour Palette & Pen Width options.



(HIGHLIGHTER) Left-click to highlight. Right-click for Colour Palette & Pen Width options.



(ERASER) Left-click to erase. Right-click for eraser width options.



(CLEAR SCREEN) This is to clear the screen of all annotations. Right-click for options.



(REVEAL) Click to reveal. Right-click to show reveal options.



(SPOTLIGHT) Click to bring up spotlight. Right-click to show spotlight options



(SNAPSHOT) Take a quick snapshot. Drag to select an area on screen and release to take the snapshot.



(KEYBOARD) Display on-screen keyboard



(VIDEO CAPTURE) Record video from attached web cam, Visualiser etc

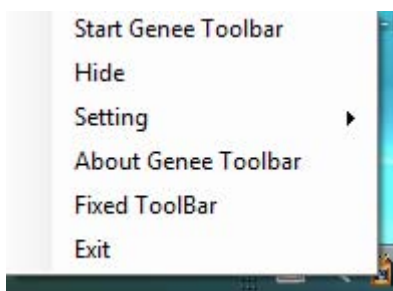
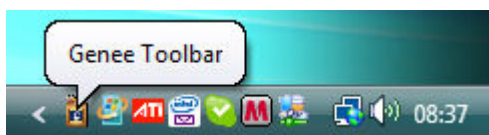


(IMAGE CAPTURE) Capture images from attached camera sources.



(CLOSE) Exit Genee Toolbar.

Toolbar Settings – Right-click the Genee Toolbar icon in the system tray to access the settings menu and other Toolbar options as shown below...



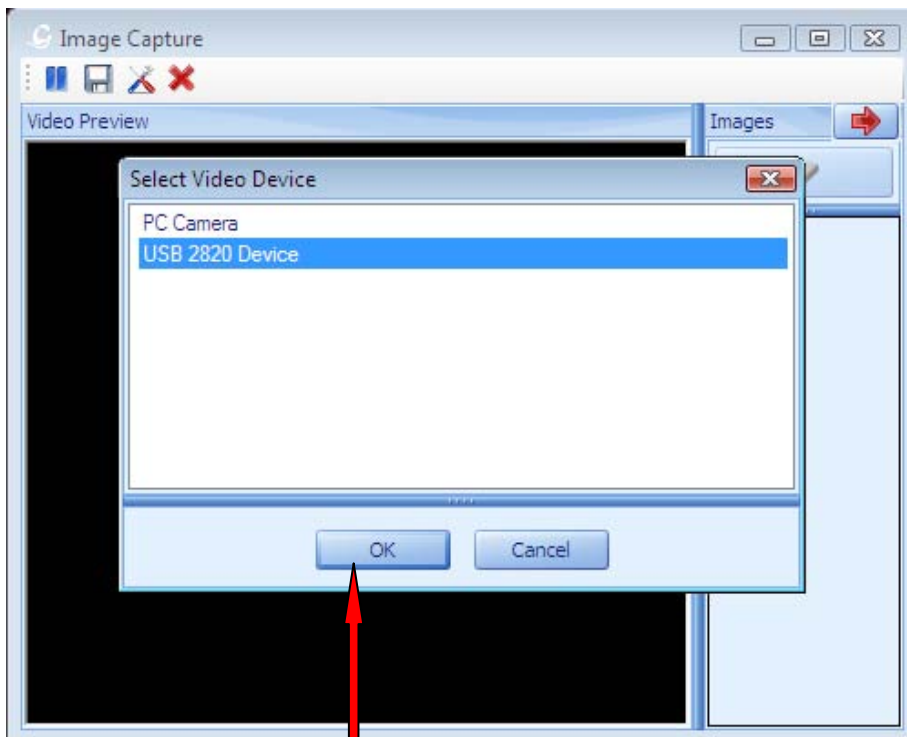
From the settings menu, you can set/change the following options:

- Toolbar Tab
- Toolbar Position
- Reveal Settings
- Spotlight
- Video
- Snapshot – Set default path
- Annotator

GENEE TOOLBAR - IMAGE CAPTURING



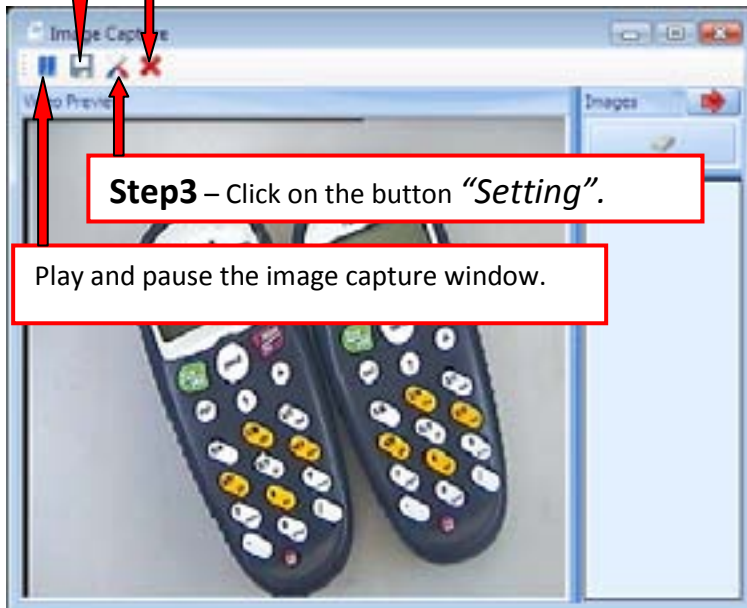
Step1 – Click on the icon “*Image Capture*” from the Genee Toolbar. Image Capture window will open up along with a form to select the Video Device from a list of cameras attached to the PC.



Step2 – Video Device’s connected to the PC will show in the list. Select the Video Device from the list and click on *OK* button.

Save the Image in the selected Image Format.

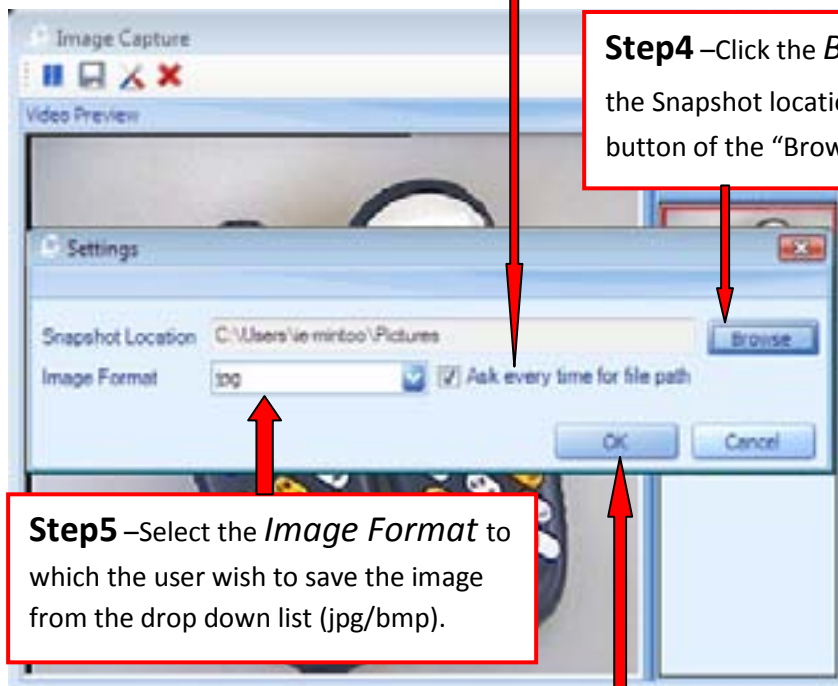
Close the Image Capture window.



Step3 – Click on the button *“Setting”*.

Play and pause the image capture window.

The “Ask every time for file path” option if checked, prompts the user for snapshot location & image format for each image taken. If deselected, image will be saved to previous image location path until changed by the user.

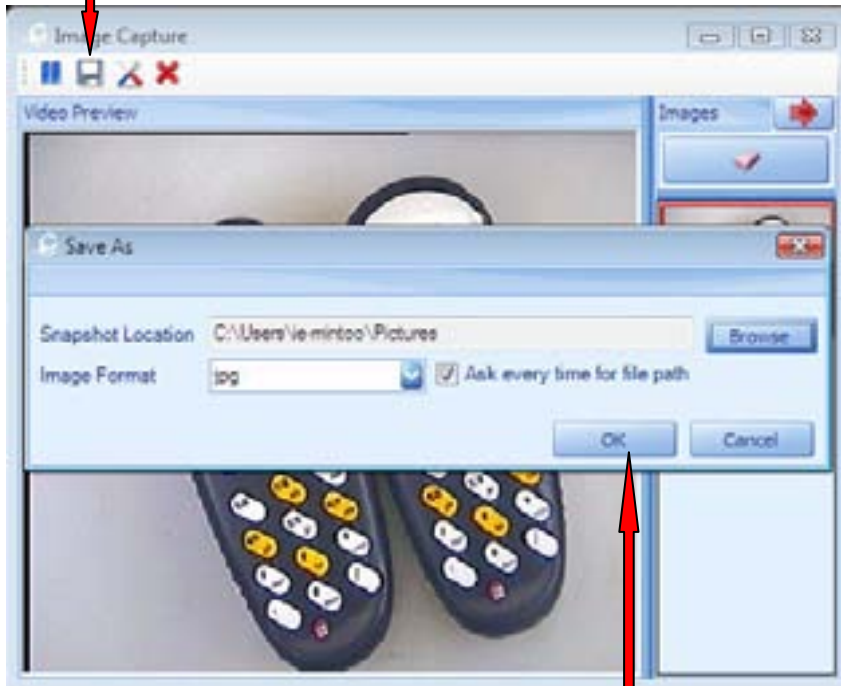


Step4 –Click the *BROWSE* button to select the Snapshot location and click on *OK* button of the “Browse for Folder” window.

Step5 –Select the *Image Format* to which the user wish to save the image from the drop down list (jpg/bmp).

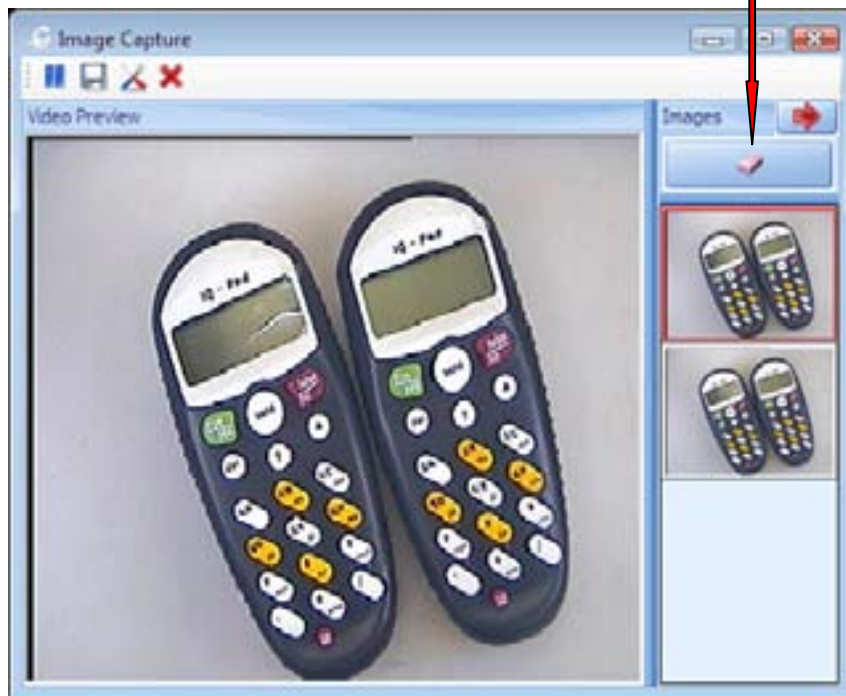
Step6 – Click the *OK* button.

Step7 –Clicking on the *SAVE* button will open the save as dialog box for the user to set the snapshot location & image.



Step8 –Click on *OK* button. Image will be saved in the selected image format to the browsed snapshot location. A thumbnail of the captured Image will appear in the Right Pane as shown in the snapshot below.

Clicking on *Eraser* will erase all the thumbnails of captured Image's from the right pane of this window.



Clicking on the red arrow button allows the user to Hide & Show the thumbnail pane.



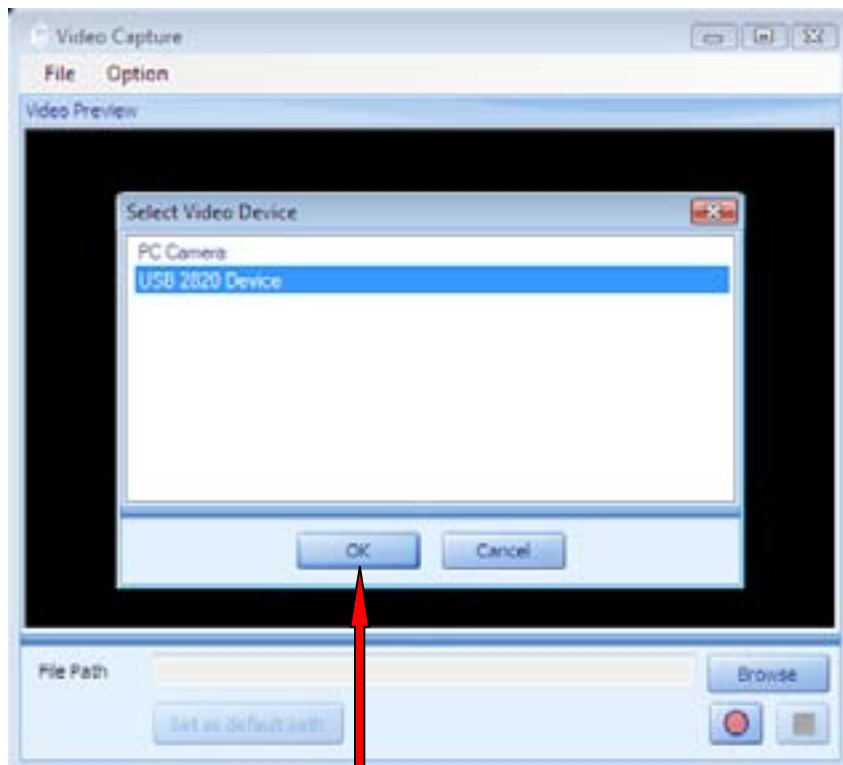
Right-click a highlighted thumbnail to remove it. Original image will NOT be deleted.

Double-clicking on thumbnails will open the image full size.

GENEE TOOLBAR - VIDEO CAPTURING



Step1 – Click on the icon “*Video Capture*” from Genee Toolbar. Video Capture window opens with option to select a video device.



Step2 – Video Device’s connected to the PC will be shown in the list. Select the Video Device from the list and click the *OK* button.

Selecting the File menu option's *Full/Exit Full Screen* will maximize/restore and *Exit* will close the Video Capture window.



Selecting the option menu > *Switch Video Device* will let you change the camera source.





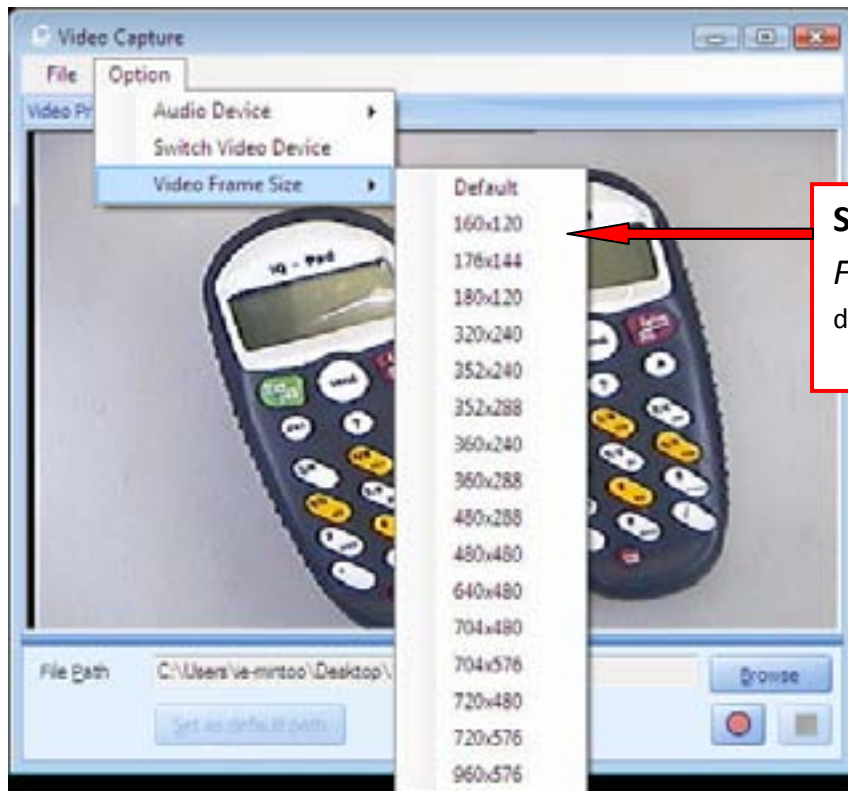
Step3 – Click the *Browse* button to select the save location and give the video a name.



Step4 – Click on *Set as default path* to set the browsed location in the previous step as the default path to save your videos to.



Step5 – Select the *Audio Device*. Audio Device menu will show all connected audio recording devices. Select a device is audio is required with the video.



Step6 – Select *Video Frame Size* from the drop down list if required.



Step7 – Clicking on the toggle button *Record/Pause* will start and pause the recording as required.



Step8 – Clicking on the *Stop* button will stop the recording.